



2006
Chairman's
Award for
Excellence in
Volunteerism

KPMG LLP

"Since I have been chairman, I have emphasized the importance of professionalism in everything we do. Our promise of professionalism to each other, our clients, and the capital markets extends to the communities where we live and work. Each of you is a wonderful example of how we, as individuals and teams, use our time and resources to support our communities—a core value of KPMG. I commend you, the winners of KPMG's Chairman's Award for Excellence in Volunteerism, for your commitment and selfless dedication to community service."



Tim Flynn
Chairman & CEO
KPMG LLP



2006 Chairman's Award for Excellence in Volunteerism

MIDATLANTIC

Evan M. Kalfus, *Tax Managing Director*
Robert J. Capriotti, *Management*
Julie E. Daniels, *Sr. Associate/Associate*
Myrna Gonzalez, *Client Service Support*

SOUTHWEST

John Kennedy, *Partner*
Katie J. Alexander, *Management*
Felipe D. Castillo, *Sr. Associate/Associate*
Deborah L. Webb, *Client Service Support*

MIDWEST

Rodney L. Anderson, *Partner*
Michele L. Heath, *Management*
Alina G. Doroshko, *Sr. Associate/Associate*
Angela Y. Robertson, *Client Service Support*

WEST

Mark T. Thomas, *Partner*
Charles E. Kozak, *Management*
Richard J. Perez, *Sr. Associate/Associate*
Ginger Molloy, *Client Service Support*

NORTHEAST

Stephen J. Clemente, *Partner*
Steven Lawless, *Management*
Mary Anne Hepburn, *Sr. Associate/Associate*
Denise Devereux, *Client Service Support*

NSS/MONTVALE

Victoria V. Sweeny, *Partner*

INVOLVE COORDINATOR

Geraldine P. Williams, *Involve Coordinator*

SOUTHEAST

Randy Laszewski, *Partner*
Francisco E. Siercke, *Management*
Staci Henson Tyler, *Sr. Associate/Associate*
Mary-Heather Tatum, *Client Service Support*



EVAN M. KALFUS

Tax Managing Director, Norfolk

Evan has been involved with a number of committees of the Virginia Beach Foundation, which organizes continuing professional education (CPE) for accountants, attorneys, and insurance agents working for charitable organizations. He has helped to plan a number of fundraisers, such as an annual golf tournament and an annual charitable planning seminar. Evan has served on the executive management committee of the Tidewater Jewish Foundation to help establish an audit committee, and recently entered his second term on its board of directors. Evan's more than 14 years of experience with tax compliance, matters before the Internal Revenue Service, mergers and acquisitions, reorganization, choice of entity analysis, and state and local tax planning greatly contributes to the organizations he serves.

ROBERT J. CAPRIOTTI

Management, Philadelphia



Rob is the KPMGKares Philadelphia cofounder and organizer of the weeklong volunteer trip to Thibodaux, Louisiana, to work with Habitat for Humanity in building new homes for those affected by Hurricanes Katrina and Rita. Rob helped plan, organize, and execute the trip logistics, coordinating with Habitat to make it a successful venture. This trip led to three additional trips by teams in New York and the Midatlantic RAS practice. The KPMGKares team is focused on offering assistance to less fortunate members of our community in their time of need. Rob is also active in volunteerism closer to home; he works with a group of KPMG employees that visits a local homeless shelter on a semiannual basis to provide lunch to more than 200 residents. He dedicates 15 to 20 hours each year to this project. The group provides all the food and supplies, and prepares and serves the meal. Rob is an associate board member of the St. Christopher's Foundation, whose mission is to help support the health needs of children. The foundation's main goal for 2006 is to raise funds to support the construction of the second Philadelphia Ronald McDonald House. He expects to commit 50 to 60 hours this year to the foundation.

JULIE E. DANIELS

Senior Associate/Associate, Harrisburg

Julie volunteers countless hours for numerous KPMG-sponsored and non-KPMG-sponsored events. Julie walked and raised funds as part of the KPMG Relay For Life team. Dining with Diakon is an annual fund-raising event for Diakon Lutheran Services, and KPMG receives a sponsorship for its in-kind services at the event, including the registration and auction accounting. Julie volunteered for the accounting auction, which raised more than \$85,000. The Penn State Diabetes Center, located in Hershey, Pennsylvania, also holds an annual Gala where KPMG receives a sponsorship for its in-kind services at the event. Julie volunteered for the auction, which raised more than \$75,000 for the Diabetes Center. She is now the volunteer coordinator for this year's Gala, which was held October 7. The Juvenile Diabetes Research Foundation's Central Pennsylvania chapter also holds an annual Gala for which Julie volunteered. This event raised more than \$330,000 for JDRF. Julie also volunteers at her church, David's UCC, where she is a nursery Sunday school teacher and the church treasurer. In addition, she coaches elementary girls' basketball for the Line Mountain School District. Her estimated volunteer hours for the year exceed 80. Julie has a passion for volunteering and is an inspiration and role model for her peers.



MYRNA GONZALEZ

Client Service Support, Washington D.C.

Since 1994 Myrna has supported military families and organized her office's collection of care-package items for our troops overseas. She spearheaded and leads the Washington, D.C./Tysons Corner 9/11 Remembrance Committee, which dedicates its work to raising funds for the Pentagon Memorial Fund. Myrna organizes and chairs meetings and has taken the lead on a Flag Day Raffle; Red, White & Blue Jeans Day; and T-shirt sales to support the Fund. This year the 9/11 Remembrance Committee commemorated the fifth anniversary of the events of September 11. Committee members can attest that Myrna is the glue that holds them together, keeping them organized and on track to meet their meeting and monetary goals.



RODNEY L. ANDERSON

Partner, Lincoln/Omaha



Rod is being recognized for his work as a board member with the Samaritan Counseling Centers of the Midlands, a nonprofit organization that offers mental health counseling on a sliding fee scale. Rod, currently vice president and for many years treasurer, has been active with the Omaha counseling center since its formation and has remained committed through the center's struggles to make budget, meeting regularly with the director to formulate plans. Rod currently serves on the board of directors of the Field Club of Omaha, and helped turn the club around in the year he served as president. He is also involved with Catholic Charities, Omaha Chamber of Commerce, and St. Paul United Methodist Church Foundation, and is a volunteer girls' basketball coach. Rod is committed to making the community a better place and goes about his volunteerism in a quiet and humble manner.

MICHELE L. HEATH

Management, Cincinnati



Michele is being recognized for her work with several organizations, including the National Black MBA Association, Inc. The Association, formed and incorporated as a nonprofit in 1974, is a national network of business professionals across the United States whose mission is to lead in the creation of economic and intellectual wealth for the black community. One of its largest initiatives is the Leaders of Tomorrow, an outreach program that helps expand the cadre of future minority students who enter college and go on to become business leaders. Michele was instrumental in helping build the foundation for the Cincinnati program. She is now the coordinator for the Greater Cincinnati Leaders of Tomorrow program, for which she has logged approximately 100 hours of service. Michele has been involved with this program since 1997. Michele is also involved with Delta Sigma Theta Sorority Inc., Wesley Education Center for Children and Families, and Cincinnati Playhouse in the Park.

ALINA G. DOROSHKO

Senior Associate/Associate, Chicago

Alina gets involved by participating in Junior Achievement as a volunteer teacher for fifth-grade students, volunteering on a regular basis at a local hospital and participating in the Tax Assistance Program where she uses her accounting knowledge to prepare tax returns for low-income families. Alina participated in several of KPMG's fund-raising events, including the Multiple Sclerosis 150 bike ride raising more than \$1,700 for the organization. Not content with simply getting involved herself, Alina uses her glowing personality to help recruit others as well. Her dedication to getting involved is unmatched and an inspiration to us all.



ANGELA Y. ROBERTSON

Client Service Support, Minneapolis

Angela has a strong commitment to volunteering and has participated in many fund-raising activities. However, her support of the American Cancer Society's Making Strides Against Breast Cancer Walk has been particularly impressive. She was the top online fund-raiser in the Twin Cities for 2005, which elevated KPMG to the top corporate fund-raiser for the year. This year she will be the online chairperson and a team mentor. Other organizations that Angela is passionate about and dedicates much of her time to are the American Heart Association, the March of Dimes, and the Lymphoma Research Foundation. Angela has been in remission from Non-Hodgkin's Lymphoma for three years and has remained cancer free. Angela is focused, energetic, and truly passionate about her activities that support the community and is dedicated to helping raise awareness about various diseases through her fund-raising efforts.



Northeast

STEPHEN J. CLEMENTE

Partner, New York



Steve is being recognized for his involvement with the Young Adult Institute (YAI)/National Institute for People with Disabilities. Since its inception in 1957, YAI has been a national leader in providing services, education, and training in the field of developmental and learning disabilities. Through YAI Steve has worked on various initiatives to help create employment opportunities for individuals with developmental disabilities. His commitment to community service is evident in his willingness to partner with new organizations that support people with disabilities, including his assistance in establishing and championing a People with Disabilities Network in the New York Office.

STEVEN LAWLESS

Management, New York



Steven has been KPMG's New York office Junior Achievement Bowl-A-Thon coordinator since 1998. Over the past eight years, the office has raised nearly \$200,000 for this worthy cause. Steven has worked hard to grow this event, which has seen increased participation each year. During this past year, he spent approximately 80 hours working on the Bowl-A-Thon event and helped organize 33 teams to participate, raising more than \$30,000. Steven has worked with Junior Achievement for 11 years, including teaching at a local school and helping to organize as well as participating in various other Junior Achievement fund-raising events.

MARY ANNE HEPBURN

Senior Associate/Associate, Hartford

For more than 20 years, Mary Anne has been a host to children in need of assistance, ranging from aiding troubled youths in detention facilities to helping teen mothers with children get through high school and college. The first medical mission assisted by Mary Anne was for a boy from Honduras named Lito. Lito has thick black hair that extends over a large portion of his face, a condition called Congenital Hairy Nervus, which, if left untreated, can turn into cancer. Lito's case was accepted by a team of doctors and laypeople who annually travel on a medical mission to Honduras, supported by Corpus Christi Church. Mary Anne welcomed Lito and his father into her home and supported them through this incredible experience by taking them to Boston for countless visits and surgeries. Mary Anne encourages more people to be host families because it is so rewarding and inspiring.



DENISE DEVEREUX

Client Service Support, Boston

Denise has raised significant funds to combat multiple sclerosis. She was recently honored as one of the top fund-raisers in 2005's MS Walk at the Multiple Sclerosis Society's Annual Awards Dinner. For the last five years, Denise's team, called *Eileen's Dream Team*, has participated in the Marblehead Walk for MS, held, coincidentally, at Devereux Beach. The team is named in honor of Denise's sister Eileen, who has been courageously living with MS for nine years. To date, Denise has personally raised almost \$21,000 for MS research and patient support programs, and her team as a whole has raised more than \$32,000.



RANDY R. LASZEWSKI

Partner, Nashville



Randy volunteers throughout his community in multiple ways that impact a variety of people. He is on the board of the YMCA, Mental Health Association of Middle Tennessee (MHA), Habitat for Humanity, Belmont University Accounting Advisory Board, and St. Thomas Hospital Audit Committee. In addition, Randy participates in the Catholic Charities as a cochair with his wife, Sandy, for the annual fund-raising dinner, the proceeds of which support community projects such as the relocation of immigrants to middle Tennessee. In support of Randy's community service activities, the firm has been the title sponsor of the Nashville Golf It Up for Kids, a YMCA fund-raiser, for six years running. As an eight-year YMCA board member, Randy has seen the organization increase in popularity and outgrow its current downtown facility. After completing a two-year term as board president, Randy was asked to return to the board and serve as chairman of the Building Committee, whose goal is to expand the current facilities to allow access to more individuals and to reach more of the surrounding community. The YMCA expects to break ground next year on this expansion. Randy is clearly dedicated to serving his community.

FRANCISCO E. SIERCKE

Management, Miami



Francisco continuously encourages awareness of multiple sclerosis within KPMG and the business community in South Florida. The 5,000 people living with MS in South Florida can certainly benefit from his efforts. Over the last three years, Francisco has personally raised more than \$4,000, with his team contributing another \$15,000, to help fund research and provide services to those who suffer from MS. Francisco and his team spent two to three months every year in training, gearing up for a 150-mile bike ride in support of finding a cure for this devastating disease.

STACI HENSON TYLER

Senior Associate/ Associate, Jackson



Staci is very passionate about being involved in her community and has participated in many volunteer activities. She participated in the Millsaps Chili Bowl Cook-off to support the LifeShare Foundation, whose mission is to address the unmet needs of Mississippi's most at-risk and underprivileged children. Staci also participated in the American Cancer Society's Relay For Life and in Hurricane Katrina relief efforts through Helping Hands, an organization that was created in the wake of Hurricane Katrina and whose mission is to provide disaster relief. Staci also serves on the Make-A-Wish Foundation of Mississippi's Corporate Sponsorship Committee. The Make-A-Wish Foundation provides resources for children with catastrophic diseases to have their "wish come true."

MARY-HEATHER TATUM

Client Service Support, Atlanta



Mary-Heather has served on the board of PATHworks, an Atlanta area nonprofit dedicated to creating and maintaining greenway trails for the city and state, for the past five years. She has organized and taken on a leadership role in planning several of the firm's KNOW Atlanta community service-related projects, such as clothing drives during Women's History Month benefiting the YWCA Women's Shelter and "Women in Transition" program and the National Women's Alliance. She has cochaired Family Volunteer Day twice and served as a team captain for its projects at the Piedmont Park Conservancy in 2004 and 2006 and YWCA shelter in 2005. She also facilitated a project in 2005 for "Buildable Hours," a national Habitat for Humanity initiative that links attorneys and accountants for a day of service. Additionally, she is a 2006 AIDS Lifecycle team sponsor and member of the KPMG Atlanta office's *Involve* committee for the past three years.

JOHN T. KENNEDY

Partner, Albuquerque



A significant portion of John's volunteer efforts is dedicated to Junior Achievement, whose mission is to teach children to appreciate business. He has worked as both a classroom volunteer and a board member for JA for 12 years. John recently introduced the JA program on the Navajo Nation Indian Reservation. He recruits and trains volunteers and then matches them with classrooms of Navajo children. In addition to JA, he serves as a board member and treasurer for the Golden Apple Foundation of New Mexico. This organization annually recognizes the best secondary teachers (elementary, middle, and high school) throughout New Mexico by providing them financial rewards to further their already outstanding skills (\$10,000 per teacher). The Golden Apple Foundation also sponsors programs that provide mentors to new teachers as they earn their college degrees and then as they enter the teaching profession. During the past year John participated in the American Cancer Society's Relay For Life, a KPMG national *Involve* community activity. For the last four years he served as the assistant cubmaster for a local scout troop.

KATIE J. ALEXANDER

Management, Denver



Katie believes volunteerism is essential to one's self-esteem and life balance. She donates her time to an organization called MOPS, which encourages mothers of preschoolers to care for themselves, their children, their families, and their communities in their utmost moral selves. It provides support and guidance for teenage mothers, single mothers, and struggling mothers. As a leader in the MOPS organization, Katie brings an extra dynamic to the table as a full-time working mom and helps other mothers learn that planning can help them create balance in their lives. She helps them to slow down in order to focus and determine what is important. Katie serves as a chair on both MOPS and Junior League of Denver, and she volunteers for Junior Achievement and Oasis, which allows her to support volunteerism and its impact through hands-on example.

FELIPE D. CASTILLO

Senior Associate/Associate, Dallas

Felipe chairs one of the firm's most popular volunteer events, Hearts and Hammers. In his role, he works with the Dallas city-wide organization that plans home renovations for the elderly each September. This year will be Felipe's third year serving as project chairman, which entails selecting a home in need of painting and repair, meeting with the homeowner, arranging for needed supplies, and recruiting and coordinating volunteers on work day. Last September, more than 60 KPMG volunteers completed a successful home facelift and updated landscaping for a South Dallas widow.



DEBORAH L. WEBB

Client Service Support, Dallas

Debbie's energy, enthusiasm, and commitment kick into overdrive while she serves as chairman for the firm's annual Bowl for Kids' Sake event, which is the Dallas office's largest volunteer event. Debbie recruited 58 teams in 2006, representing 300 bowlers and raising a record \$41,000 for mentoring programs of Big Brothers Big Sisters. Over the last four years, she initiated bowling challenges between departments, created awards for decorations and costumes, involved big and little sisters and brothers in the event, encouraged family participation with kids' activities, and created a fun, successful charity event. Debbie also diligently supports many other Dallas volunteer efforts, including chairing a holiday gift drive for Buckner Children's Home.



MARK T. THOMAS

Partner, Orange County



Mark led teams of adults and students to visit World Vision staff and participate in programs in Malawi, Africa, the sixth poorest country in the world. World Vision's mission is to serve the world's poorest and most oppressed people, especially children. The results of this humanitarian effort were substantial. More than 900 African children were ultimately sponsored by individuals in Southern California, making this one of the most successful sponsorship drives in World-Vision history. While in Malawi, the teams had a high-profile itinerary, working in schools and other venues and reaching out to more than 10,000 local Africans with messages on the importance of education as well as AIDS prevention. Mark and his team members each spent at least 700 hours in preparation and travel. On one trip, Mark and a team traveled to a community in Africa to create a film showing the community's needs and bringing awareness back to the people in Southern California.

CHARLES E. KOZAK

Management, Anchorage



Charlie is chairman of the board of directors of Special Olympics Alaska (SOAK), the youngest chairman in SOAK's 35-year history. He has served on the board since 2002 and has dedicated hundreds of hours to SOAK. Charlie also assists with statewide sports competitions and fund-raisers. He was instrumental in establishing an endowment and helping to obtain the \$1.7 million in funding needed to purchase the SOAK athlete center and campus. Through his leadership, more than 100 KPMG employees have volunteered for SOAK state games and participated in KPMG's Anchorage office Day of Caring, an event in which Charlie led his KPMG colleagues in painting SOAK's new athletic center. Among SOAK's achievements under Charlie's direction are new standards and policies that serve as a model for other not-for-profits, the formation of an endowment that now exceeds \$800,000, and improvement in the quality of sports competition as well as an increase in the number of participating athletes within SOAK.

RICHARD J. PEREZ

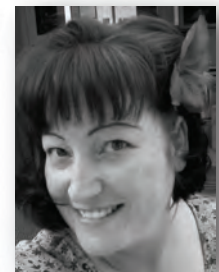
Senior Associate/Associate, Los Angeles



Richard organized the 2005 and 2006 Junior Achievement Bowl-A-Thons. This year's JA event, with approximately 80 bowlers, raised enough funds to allow JA to provide services through its programs to more than 350 children in Southern California. Through the Heal the Bay organization in Santa Monica, Richard's office adopted a beach for the year and has so far planned and executed two beach clean-up events that resulted in the collection of more than 300 pounds of trash along Santa Monica Beach, with volunteers contributing more than 120 hours. His efforts have also been instrumental in protecting the local wildlife and water from pollution and refuse. Richard has the ability to continually exceed expectations both at work and in volunteering activities. He is always willing to participate in events and will pitch in to lend a hand to other project coordinators.

GINGER MOLLOY

Client Service Support, Silicon Valley



Ginger spearheaded her office's Operation:S.A.M. summer and holiday card drives. Operation:S.A.M. is a nonprofit organization dedicated to showing support for our troops deployed around the world. Ginger and her colleagues show their appreciation by sending soldiers a small but mighty "Comfort Package" brimming with items from home to remind them that they are thought of and supported in their efforts. She is a regular donor at office quarterly blood drives and a participant in the American Cancer Society's Relay For Life, American Heart Walk, Diabetes Walk, and Sacred Heart Thanksgiving Food Distribution Program. Ginger was an *Involve* committee member for six years, from 1999 to 2005, and actively supports Silicon Valley *Involve* events. In 2005 Ginger created a "Hall of Fame" memorial wall in her office dedicated to veterans and active military personnel.

VICTORIA V. SWEENEY

Partner, Montvale



Vicki has a great sense of commitment to her community. As a member of the Advisory Board of the Children's Museum of Central New Jersey, she and her fellow board members have raised more than \$1 million through grants and private donations to build a hands-on children's museum in Union County, New Jersey. More than \$7 million is needed to build the museum, but they are well on their way. For 15 years, Vicki has served as a member of the Junior League of Elizabeth/Plainfield (JLEP), working with many social services organizations to provide hands-on volunteers for projects such as the Career Closet Welfare to Work program, Mobile Meals for the elderly, and Healthy Families, which serves new mothers with children up to three years of age. In addition, she has been a member of the Cranford Juvenile Conference Committee (an extension of the Union County Family Court) since October 2002. Vicki continues to serve as class mother and mentoring parent to new families at the Wardlaw Hartridge School in Edison. And, despite the enormous time commitments for these important activities, Vicki also volunteers throughout the year for her daughter's Brownie troop, sharing her experiences as a former Girl Scout.

GERALDINE P. WILLIAMS

Involve Coordinator, Washington, D.C.



As her office's *Involve* coordinator since 1997, Gerri not only provides information on the numerous activities offered to employees but also gets personally involved and spearheads many of the community events. Gerri manages the Washington Foundation, a local foundation funded by KPMG partners in the Washington and Tysons Corner offices, which support nonprofit organizations where employees invest significant volunteer time. She helps other networks within KPMG and serves on the Local Action Council Area Culture and Inclusion Strategy Team and Washington, D.C. Diversity Council, offering valuable insight and tips to help ensure community connection and success. Gerri is also a member of the Greater DC Business Volunteerism Council (GDCBVC) and is often sought out by other companies that are either in the process of starting their own employee volunteer programs and need guidance or already have an established program but are looking for best practices. As an *Involve* coordinator, Gerri has spent many personal hours attending events after hours and on weekends, taking photos, purchasing items, putting together gift bags for fund-raising events, helping out at the Gay Pride Festival, and attending a graduation ceremony at a local school to participate in the Everybody Wins! mentor program. She also attended a ceremony in the fall for a marine who received an *Involve* care package while he was stationed in Iraq. Gerri is the "go-to" person for those in the office who seek to understand our relationships with the Greater Washington community. Her personal dedication, passion, and commitment are recognized not only within the KPMG family but also in the Greater Washington community. During her 22-year career at KPMG she has forged many local and national relationships on both a business and personal level.

